

## Royal Liverpool Emergency Department Monthly Bulletin: October 2011 to September 2012

This bulletin provides a breakdown of all injury attendances at the Royal Liverpool Emergency Department (ED) between October 2011 and September 2012.

Between October 2011 and September 2012 there were 30,287 injury attendances, peaking in March (n=3,237), with December (n=2,009) having the fewest. **Figure 1** gives a breakdown of monthly injury attendances by gender, illustrating that for all months there were more male (54%) injury attendances than female presenting at the Royal Liverpool ED.

The majority of injury attendances were made by people over the age of 14 years, with the highest proportion (41%) being made by 30-59 year olds (**Figure 2**). The low number of injury attendances under the age of 15 presenting at the Royal Liverpool ED could possibly be due to the close proximity of a local children's ED (Alder Hey).

**Table 1** details the injury group of attendees. The majority (70%) of injury attendances have been classified as other injury. This category includes injuries such as head injuries and arm injuries. Almost three quarters (73%) of injuries occurred in the home (**Table 2**).

The disposal method of attendees can give an indication of the severity of the injury sustained. Over four in ten (45%) injury attendances were discharged from the ED and almost three in ten (29%) were admitted to hospital (**Table 3**).

### Assault questionnaire\*

The Royal Liverpool ED collects additional information on assault attendances and a summary of this data is provided in this report. More detailed information collected by staff at the Royal Liverpool ED on issues such as the specific location of assault (e.g. pub name/street), is provided by TIIG to local agencies such as Citysafe in a separate report to the one produced here.

There were 1,802 assault attendees presenting at the Royal Liverpool ED between October 2011 and September 2012. These were mainly male (74%) and 55% were aged between 15-29 years.

**Table 4** shows that where data was collected<sup>^</sup>, 61% of assault attendances had consumed alcohol within three hours prior to their attack. Eight in ten (80%) of all assault locations were unknown between October 2011 and September 2012. Of those known, over half (48%) occurred on the street (**Table 5**).

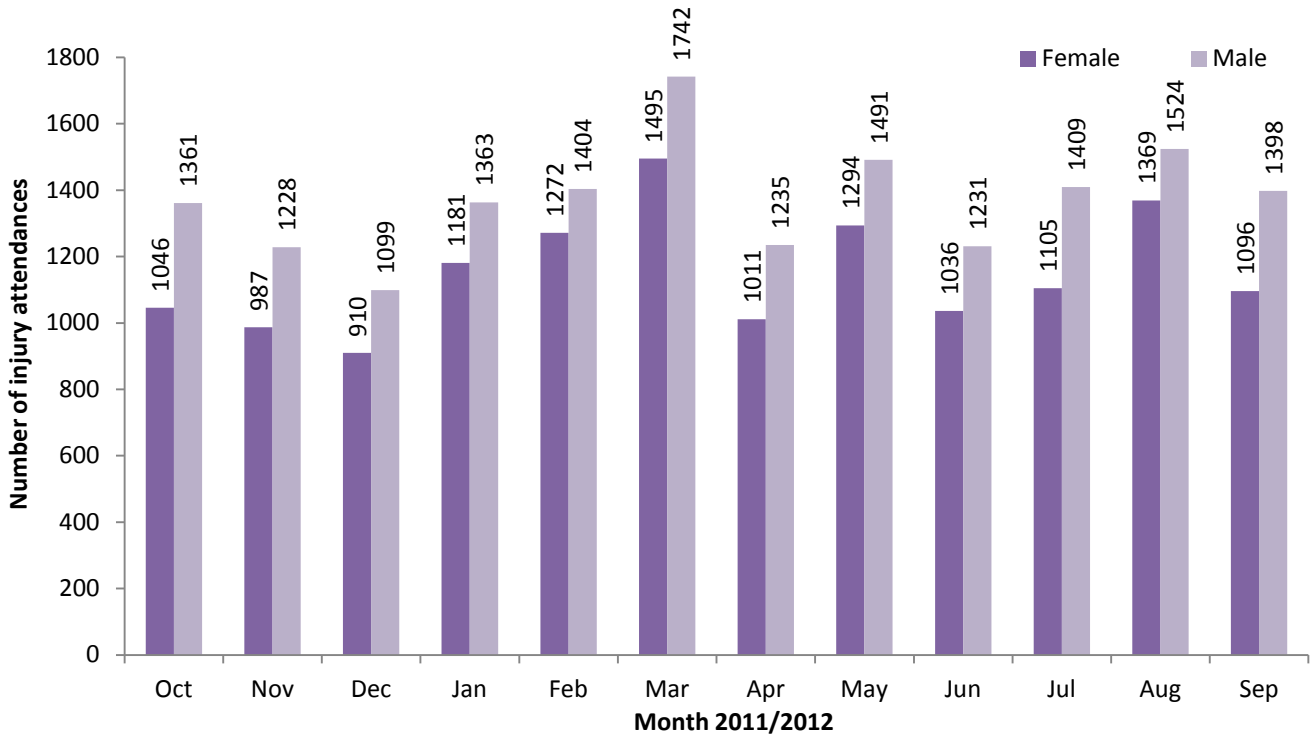
**Table 6** shows that the relationship between assault attendees and those involved in the assault was unknown in the majority (82%) of incidents. Where data was collected<sup>^</sup>, 59% of assault patients had been assaulted by a stranger and 12% by an acquaintance/friend.

**Table 7** shows the weapon used in the assaults. Of those with a known weapon type<sup>^</sup>, 66% were attacked with a body part, such as a fist, 8% with a knife and 5% with a bottle.

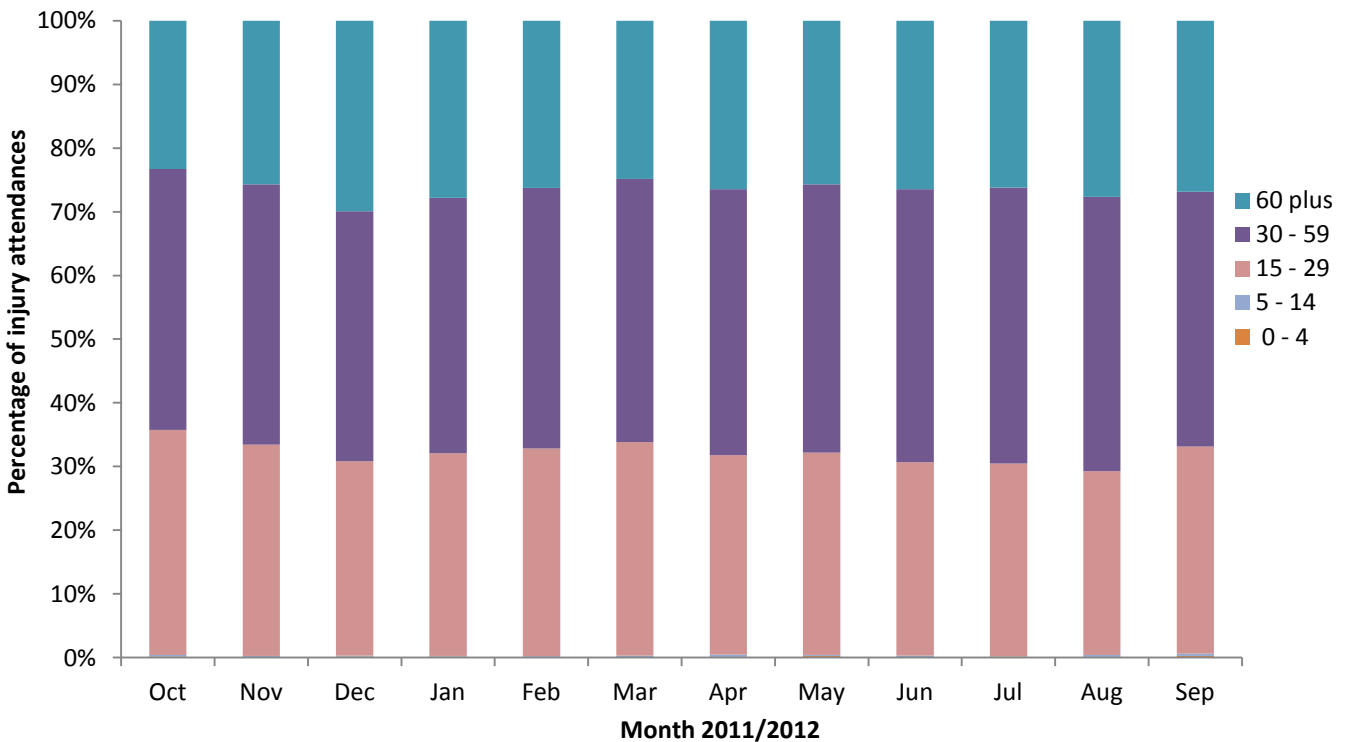
\* Please note that although a patient may complete the assault patient questionnaire data may not be provided for each question as the patient can refuse or be unable to answer particular questions. Data provided in the following analyses represent those patients who completed each question.

<sup>^</sup> Not including unable to answer, refused to answer or unknown

**Figure 1: Gender of injury attendances by month, October 2011 to September 2012**



**Figure 2: Age group of injury attendances by month, October 2011 to September 2012**



**Table 1: Injury attendances by injury group and month, October 2011 to September 2012<sup>123</sup>**

Injury group	Oct	Nov	Dec	Jan	Feb	Mar	Apr	May	Jun	Jul	Aug	Sep	Total	%
Other injury	1586	1458	1153	1824	1907	2532	1555	2024	1529	1799	2141	1750	21258	70
Fall	266	291	369	280	329	302	302	315	302	283	326	261	3626	12
Assault	202	143	162	158	140	138	137	147	132	139	145	159	1802	6
Overdose	120	106	116	99	117	110	104	134	136	137	133	123	1435	5
Sport injury	132	115	139	101	88	75	63	78	75	61	81	111	1119	4
RTC*	49	66	38	41	63	45	41	39	53	35	32	45	547	2
Burn	16	21	12	27	14	21	24	31	19	24	18	23	250	1
Self-harm	36	15	20	14	18	14	20	17	21	36	17	22	250	1
<b>Total</b>	<b>2407</b>	<b>2215</b>	<b>2009</b>	<b>2544</b>	<b>2676</b>	<b>3237</b>	<b>2246</b>	<b>2785</b>	<b>2267</b>	<b>2514</b>	<b>2893</b>	<b>2494</b>	<b>30287</b>	<b>100</b>

\*Road traffic collision

**Table 2: Injury attendances by location of incident and month, October 2011 to September 2012**

Location	Oct	Nov	Dec	Jan	Feb	Mar	Apr	May	Jun	Jul	Aug	Sep	Total	%
Home	1594	1527	1292	1894	1931	2491	1679	2152	1696	1962	2224	1791	22233	73
Other	354	321	339	279	316	373	258	312	265	238	337	376	3768	12
Public place	383	276	328	319	343	302	251	263	256	256	273	273	3523	12
Work	45	56	38	34	57	43	39	39	39	41	42	36	509	2
Leisure facility	31	35	12	18	29	28	19	19	11	17	17	18	254	1
<b>Total</b>	<b>2407</b>	<b>2215</b>	<b>2009</b>	<b>2544</b>	<b>2676</b>	<b>3237</b>	<b>2246</b>	<b>2785</b>	<b>2267</b>	<b>2514</b>	<b>2893</b>	<b>2494</b>	<b>30287</b>	<b>100</b>

**Table 3: Injury attendances by disposal method and month, October 2011 to September 2012<sup>4</sup>**

Disposal	Oct	Nov	Dec	Jan	Feb	Mar	Apr	May	Jun	Jul	Aug	Sep	Total	%
Discharged	965	938	804	983	1184	1591	930	1301	1082	1224	1387	1180	13569	45
Admitted	721	651	668	778	789	894	695	797	624	667	759	698	8741	29
Discharge - follow-up by GP	177	159	120	242	184	201	172	164	114	130	170	125	1958	6
Left - before being treated	106	84	91	86	116	148	72	122	103	124	143	116	1311	4
Referred to other HCP	117	103	69	94	106	101	106	113	100	112	105	99	1225	4
Left - refused treatment	105	82	89	83	84	98	82	79	80	74	124	97	1077	4
Referred to fracture clinic	92	97	72	131	97	95	76	93	67	87	93	75	1075	4
Referred to ED clinic	52	41	36	55	42	48	35	52	29	35	41	52	518	2
Referred to OPD clinic	33	35	35	49	44	30	42	33	36	30	35	34	436	1
Other	16	12	10	25	14	15	27	24	25	23	26	11	228	1
Transfer to other HCP	16	11	9	9	10	9	***	5	***	***	6	***	87	0
Patient died in department	<10	***	<7	<10	<7	<10	5	***	***	6	***	***	<60	0
Restored to ward	***	***	***	***	***	***	***	***	***	***	***	***	***	0
<b>Total</b>	<b>2407</b>	<b>2215</b>	<b>2009</b>	<b>2544</b>	<b>2676</b>	<b>3237</b>	<b>2246</b>	<b>2785</b>	<b>2267</b>	<b>2514</b>	<b>2893</b>	<b>2494</b>	<b>30287</b>	<b>100</b>

**Table 4: Assault attendees' alcohol consumption within three hours prior to the assault by month, October 2011 to September 2012**

Alcohol consumption	Oct	Nov	Dec	Jan	Feb	Mar	Apr	May	Jun	Jul	Aug	Sep	Total	%
Unknown	169	135	141	128	74	105	92	113	94	119	132	137	1439	80
Yes	18	***	7	24	39	20	22	17	19	***	***	10	186	10
No	7	***	13	***	23	12	13	11	11	7	6	8	117	6
Unable to answer	<7	***	***	***	***	***	<9	***	***	<8	***	***	38	2
Refused to answer	***	***	***	***	***	***	***	***	<8	***	***	***	22	1
<b>Total</b>	<b>202</b>	<b>143</b>	<b>162</b>	<b>158</b>	<b>140</b>	<b>138</b>	<b>137</b>	<b>147</b>	<b>132</b>	<b>139</b>	<b>145</b>	<b>159</b>	<b>1802</b>	<b>100</b>

<sup>1</sup> Please note that, from April 2011, changes have been made in the way data is collected by the ED. It appears that more attendances are being coded with an injury group 'other than above', resulting in these cases being classed as non trauma and therefore not included in these analyses.

<sup>2</sup> Please note that all numbers less than five have been suppressed in line with patient confidentiality and if there is only one number less than five in a category then two numbers will be suppressed at the next level (e.g. <6) in order to prevent back calculations from totals.

<sup>3</sup> Please note percentages might not add to one hundred due to rounding.

<sup>4</sup> OPD= out-patient department, HCP= health care provider, GP= General Practitioner.

**Table 5: Assault attendances by location of incident and month, October 2011 to September 2012**

Assault location	Oct	Nov	Dec	Jan	Feb	Mar	Apr	May	Jun	Jul	Aug	Sep	Total	%
Unknown	169	135	141	128	74	106	92	113	94	120	132	137	1441	80
Street	13	6	8	11	37	20	15	13	16	8	7	10	164	9
Bar/pub	5	***	***	7	14	***	7	5	9	***	***	***	56	3
Your home	***	***	5	***	6	6	7	8	7	***	***	***	49	3
Club	5	***	***	***	***	***	***	***	***	***	***	***	22	1
Other	***	***	***	***	***	***	***	***	***	***	***	***	20	1
Someone else's home	6	***	***	***	***	***	***	***	***	***	***	***	19	1
Refused to answer	***	***	***	***	***	***	***	***	***	***	***	***	13	1
Workplace	***	***	***	***	***	***	***	***	***	***	***	***	10	1
Unable to answer	***	***	***	***	***	***	***	***	***	***	***	***	8	0
<b>Total</b>	<b>202</b>	<b>143</b>	<b>162</b>	<b>158</b>	<b>140</b>	<b>138</b>	<b>137</b>	<b>147</b>	<b>132</b>	<b>139</b>	<b>145</b>	<b>159</b>	<b>1802</b>	<b>100</b>

**Table 6: Assault attendances by relationship with attacker and month, October 2011 to September 2012**

Relationship with attacker	Oct	Nov	Dec	Jan	Feb	Mar	Apr	May	Jun	Jul	Aug	Sep	Total	%
Unknown	172	137	143	129	79	106	96	116	99	123	133	139	1472	82
Stranger	13	***	11	20	43	24	24	15	20	6	<6	12	196	11
Acquaintance/friend	6	***	***	***	8	***	6	7	***	***	***	***	41	2
Partner	***	***	***	***	***	***	***	***	***	***	***	***	21	1
Refused to answer	***	***	***	***	***	***	***	***	***	***	***	***	18	1
Unable to answer	5	***	***	***	***	***	***	***	***	***	***	***	18	1
Bouncer	***	***	***	***	***	***	***	***	***	***	***	***	17	1
Family member	***	***	***	***	***	***	***	***	***	***	***	***	10	1
Work mate/colleague	***	***	***	***	***	***	***	***	***	***	***	***	***	0
Ex-partner	***	***	***	***	***	***	***	***	***	***	***	***	***	0
Police	***	***	***	***	***	***	***	***	***	***	***	***	***	0
Work client/customer	***	***	***	***	***	***	***	***	***	***	***	***	***	0
<b>Total</b>	<b>202</b>	<b>143</b>	<b>162</b>	<b>158</b>	<b>140</b>	<b>138</b>	<b>137</b>	<b>147</b>	<b>132</b>	<b>139</b>	<b>145</b>	<b>159</b>	<b>1802</b>	<b>100</b>

**Table 7: Assault attendances by method of attack and month, October 2011 to September 2012**

Method of attack	Oct	Nov	Dec	Jan	Feb	Mar	Apr	May	Jun	Jul	Aug	Sep	Total	%
Unknown	172	136	142	128	74	106	93	113	96	121	132	137	1450	80
Body part (e.g. fist)	15	***	17	22	49	21	27	25	24	8	<10	12	232	13
Knife	***	***	***	***	***	***	7	***	***	***	***	***	27	1
Unable to answer	6	***	***	***	***	***	***	***	***	***	***	***	20	1
Other	***	***	***	***	***	***	***	***	***	***	***	***	19	1
Bottle	***	***	***	5	***	***	***	***	***	***	***	***	17	1
Blunt object	***	***	***	***	***	***	***	***	***	***	***	***	16	1
Refused to answer	***	***	***	***	***	***	***	***	***	***	***	***	12	1
Glass	***	***	***	***	***	***	***	***	***	***	***	***	9	0
<b>Total</b>	<b>202</b>	<b>143</b>	<b>162</b>	<b>158</b>	<b>140</b>	<b>138</b>	<b>137</b>	<b>147</b>	<b>132</b>	<b>139</b>	<b>145</b>	<b>159</b>	<b>1802</b>	<b>100</b>

Published February 2013

Jennifer Brizell (Merseyside and Cheshire TIIG Research Analyst)

Centre for Public Health, Liverpool John Moores University,

2<sup>nd</sup> Floor, Henry Cotton Building, 15-21 Webster Street, Liverpool, L3 2ET

Tel: 0151 231 4500, Email: [j.s.brizell@ljmu.ac.uk](mailto:j.s.brizell@ljmu.ac.uk)

For enquiries please contact Val Upton: [v.a.upton@ljmu.ac.uk](mailto:v.a.upton@ljmu.ac.uk)

Website: [www.tiig.info](http://www.tiig.info) (please note data requests should be made through the website)